

\* Technical data and features subject to change without notice

### Pumping unit technical data

		HP1608EC
Max. theoretical output	m <sup>3</sup> /h yd <sup>3</sup> /h	160 210
Max. pressure on concrete	bar psi	80 1160
Conc. cylinders (diam. x stroke)	mm inch	230 x 2100 9" x 83"
Concrete hopper capacity	l gal	550 145
Hydraulic circuit		closed

### Control System with pumping unit HP1608EC

#### Smartronic Silver

Integrated color LCD	Diagnostic
Counters	Capsense rear panel
Pumping unit management	

#### Optional Smartronic Gold



The automatic continuous verification of the center of gravity of the machine guarantees the maximum safety of boom movement and the maximum possible coverage of the job area, even with partial opening of the stabilization.



**MBE**  
Maximum boom  
extension control

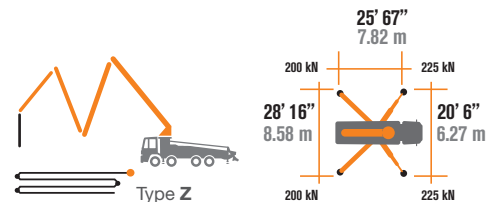


**Automatic**  
RPM Management

Total weight less than 57,320 pounds, payload to the user always available.

2 versions available - Standard version and longer version (with longer wheelbase) to meet all local road regulations.

Compact stabilization dimensions for easy placement in all types of job sites.



### Placing boom technical data

		B4Z 38/34
Pipeline diameter	mm inch	125 4.9
Max. vertical reach	m yd	37.6 41.1
Max. horizontal distance	m yd	33.4 36.52
Min. unfolding height	m yd	9.1 9.9
Number of sections		4
1st section opening angle		90°
2nd section opening angle		180°
3rd section opening angle		237°
4th section opening angle		244°
Angle of rotation		+/-270°
Length of rubber hose terminal	m yd	3 3.3



# STEELTECH Series K38L

## Standard equipment

Front outriggers "X" style for a quick set-up and easy placement in narrow areas

Driven by Stiebel PTO

"Load Sensing" proportional boom control

Boom rest control

Safety device upon opening of concrete discharge door and hopper grille

Emergency control pad for pumping unit

2 HBC proportional radio controls with 3 manipulators

Emergency radio control cable 65' (20 m)

Medium pressure water pump 19 GPM / 580 PSI (75 L/min / 40 Bar)

Led spotlights for outriggers and hopper

Double thickness concrete pipes, made of high resistant steel with chrome carbide inserts

Washing accessories

High wear resistance of major wear parts: S-Valve, wear plate, compensating ring

Declaration of conformity and use & maintenance manual supplied

## Main options

Smartronic Gold (Smartronic Silver + ASC Advanced Stability Control)

Smartronic Advanced: adds to the Smartronic Gold features the ASC2.0, Boom oscillations control ABC (Boom Antibouncing), Boom Automatic Opening & Closing, Hetriconic remote with display

Easytronic Gold (Easytronic Silver + LSC Light Stability Control)

High pressure water pump 3,96 GPM / 2175 PSI (15l/min - 150 bar)

Centralized lubrication system for placing boom

Concrete shut-off valve

Double thickness boom straight pipes, in high resistant steel and carbide chrome inserts - CIFA LLT Long Life Top

Wide customization options available on request, details available on pricelist

### Smartronic Advanced (option)



**Advanced  
Stability Control  
2.0**

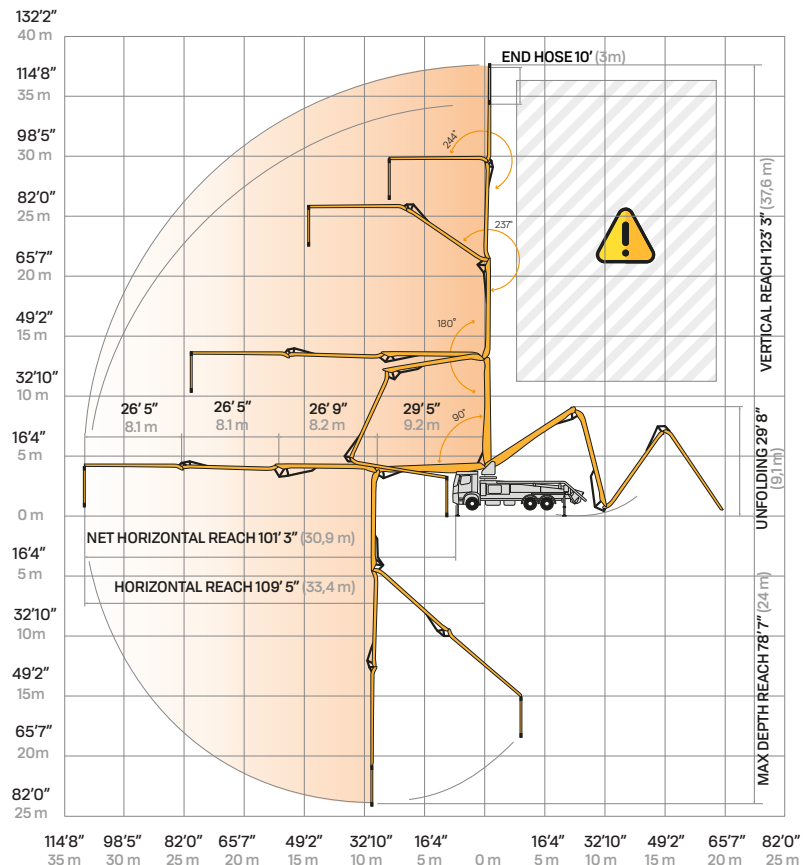


**Antibouncing**



**Boom  
automatic opening  
and closing**

## Distribution boom B4Z 38/34



Smartronic Video



CIFA North America, Inc. / 4330 Conifer Court, Union Grove, WI 53182  
Office: +1 (262) 835-4022 / sales-na@cifa.com



na.cifa.com

K38L\_USA\_1224