

* Technical data and features subject to change without notice

Pumping unit technical data

		HP18o8ECX
Max. theoretical output	yd ³ /h m ³ /h	235 180
Max. pressure on concrete	psi bar	1,220 83
Concrete cylinders (diam. x stroke)	inch mm	10"x83" 260 x 2100
Concrete hopper capacity	gal l	159 600
Hydraulic circuit		closed

Control system

Smartronic gold

- ASC Advanced stability control
- Auto RPM engine speed adjustment
- Working ramps kit for the pumping unit
- LCD monitor
- Counters
- Pumping unit management
- Diagnostics
- Capsense rear control panel

ASC is standard equipment



The automatic continuous verification of the center of gravity of the machine guarantees the maximum safety of boom movement and the maximum possible coverage of the job area, even with partial opening of the stabilization.



MBE
Maximum
boom extension
control

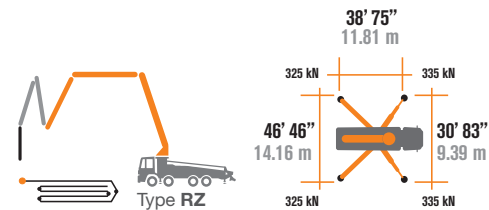


**Automatic
RPM
Management**

Total weight less than 86,100 lbs,
payload to the user always available.

Carbon fiber technology for less weight,
further reach and higher strength.

Small stabilization dimensions for easy
placement in all types of job sites.



Placing boom technical data

	B5RZ 53/48
Pipeline diameter	5" (125mm)
Max. vertical reach	170' 9" (52.1 m)
Max. horizontal distance (from center of slewing axis)	154' 5" (47.1 m)
Min. unfolding height	45' 6" (13.9 m)
Sections	5
1st section opening angle	90°
2nd section opening angle	180°
3rd section opening angle	180°
4th section opening angle	255°
5th section opening angle	180°
Rotating angle	+/-270°
End hose length	10' (3 m)



CARBOTECH Series K53H

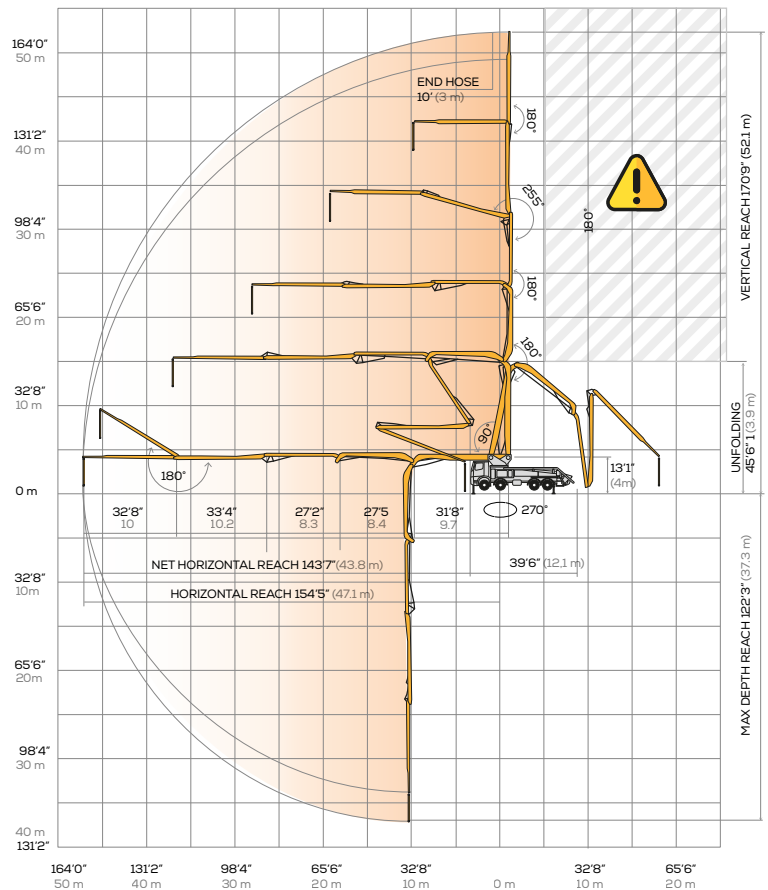
Standard equipment

- Placing boom B5HRZ 53/48, 5 sections, pipeline diameter 5", "RZ" folding system
- 4th, 5th boom sections made of light and resistant CIFA CARBOTECH composite material. 1st, 2nd and 3rd sections made of high strength steel
- Fully hydraulic outrigger controls on both sides of the truck
- Front "X" style diagonal outriggers with double telescopic opening and swing-out rear outriggers
- Boom rest control
- Safety device upon opening of concrete discharge door and hopper grille
- 2 HBC proportional radio controls with 3 manipulators
- Emergency radio control cable 65' (20 m)
- Double thickness boom straight pipes, in high resistant steel and insert carbide chrome - CIFA LLT Long Life Top
- Double thickness concrete pipes on the base, in high resistant steel and insert carbide chrome - CIFA Long Life Pipes
- High resistance plate and wear ring with chrome carbide inserts
- Remote controlled electric vibrator placed on the concrete hopper grid
- Centralized lubrication system for pumping unit
- Automatic oil lubrication system for pumping pistons
- Rear light on hopper
- Accessories for cleaning and pipes washing
- Fiber glass hopper covering
- Medium pressure water pump 19 GPM / 580 PSI (75 L/min / 40 Bar)

Main Options

- High pressure water pump 3.96 GPM / 2175 PSI (15l/min - 150 bar)
 - Air compressor for pipeline cleaning
 - Centralized lubrication system for placing boom
 - Air pipeline for placing boom
 - Separated emergency engine kit for independent control of the concrete pumping unit, boom and water pump
 - Smartronic Advanced: In addition to the Smartronic Gold functions, provides ASC.0 stability control, ABC boom oscillation control (Antibouncing), automatic boom opening and closing. Includes radio remote control Hetricon or HBC with display
 - Concrete shut-off valve
 - Rear camera for easy manoeuvring
 - Proportional radio control with display
- *More than 100 pricelist options readily available

Distribution boom B5RZ 53/48




**Advanced
Stability Control
2.0**



Antibouncing



**Boom automatic
opening and closing**

Carbon Fiber Video



Smartronic Video



CIFA North America, Inc. / 14215 Two Mile Road / Yorkville, WI 53126
Office: +1 (262) 835-4022 / sales-na@cifa.com



cifa.com

