



max
4000

5450*

13560*

* Technical data and features subject to change without notice

Pumping unit technical data

		HP1808ECX
Max. theoretical output	m ³ /h	180
Max. pressure on concrete	bar	83
Concrete cylinders (diam. x stroke)	mm	260 x 2100
Concrete hopper capacity	l	600
Hydraulic circuit		closed

Advanced Stability Control is installed as standard.

Carbon fiber technology for less weight, further reach and higher strength.

Total length is less than 14 meters.

Control System

Smartronic Plus

- ASC Advanced stability control
- MBE Maximum boom extension control
- Auto RPM engine speed adjustment
- Working ramps kit for the pumping unit
- LCD monitor
- Counters
- Pumping unit management
- Diagnostics
- Rear capsense control panel

ASC is standard equipment



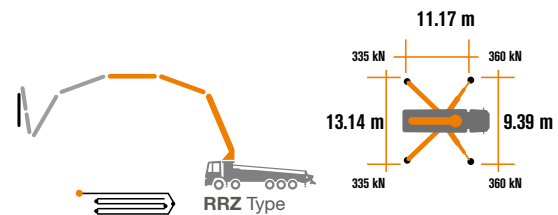
The automatic continuous verification of the center of gravity of the machine guarantees the maximum safety of boom movement and the maximum possible coverage of the job area, even with partial opening of the stabilization.



MBE
Maximum
boom extension
control



**Automatic
RPM
Management**



Placing boom technical data

		B7RZ 60/55
Pipeline diameter	mm	125
Max. vertical reach	m	59.1
Max. horizontal distance (from center of slewing axis)	m	54
Net horizontal reach	m	49.7
Min. unfolding height	m	9.7
Sections number		7
1st section opening angle		90°
2nd, 3rd, 4th section opening angle		180°
5th section opening angle		185°
6th section opening angle		210°
7th section opening angle		90°
Rotating angle		+/-270°
End hose	m	3



CARBOTECH Series K60H

Standard Equipment

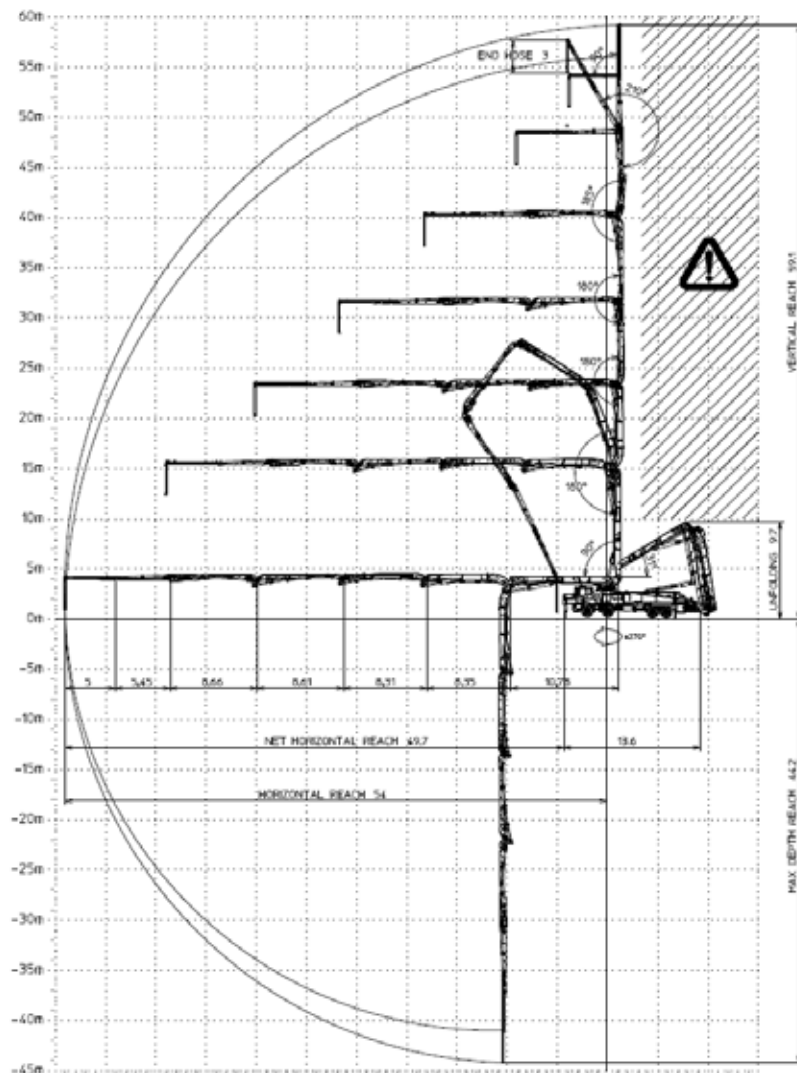
- Section I, II and III made of high strength steel
- Section IV, V, VI and VII made of light in carbon fiber
- Front "X" style diagonal outriggers with double telescopic opening and swing-out rear outriggers for a quick and easy set-up also in narrow areas
- Driven by PTO or gear box
- Boom control by means of "Load Sensing" proportional distributor
- Safety device upon opening of concrete discharge door and hopper grille
- Emergency device for pumping group
- 2 Hetronic proportional radio controls with 3 manipulators
- Emergency radio control cable 20 m
- Plastic tank: 2 x 300 l capacity for water + 2 x300 l capacity for diesel
- Medium pressure water pump (50 l/min - 50 bar)
- LED lights for stabilisation and hopper lighting
- Straight concrete piping on double layer boom with high wear-resistance chromium carbide inserts CIFA LLT Long Life Top
- Washing accessories
- High resistance of the components most subject to wear ("S" valve, wear plate, compensating ring)
- Declaration of conformity supplied with the user and maintenance manual

Main Options

- Smartronic Advanced:** In addition to the Smartronic Plus functions, provides ASC2.0 stability control, ABC boom oscillation control (Antibouncing), automatic boom opening and closing. Includes radio remote control Hetronic or HBC with display
- Automatic boom opening and closing
- Centralized boom lubrication system
- Concrete shut-off valve
- High pressure water pump (15l/min - 150 bar)
- Radio remote control: Hetronic or HBC equipped with display
- Wide choice of customer personalization colours

*Over 100 options available; details available on truck pumps optional booklet

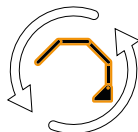
Distribution boom B7RZ 60/55



**Advanced
Stability Control
2.0**



Antibouncing



**Boom Automatic
Opening and Closing**

Carbon Fiber Video



Smartronic Video



CIFA S.p.A. / Via Stati Uniti d'America, 26 / 20030 SENAGO (MI) / ITALY
Tel. +39 02 990 131 / sales@cifa.com



cifa.com

K60H_ENG_0623